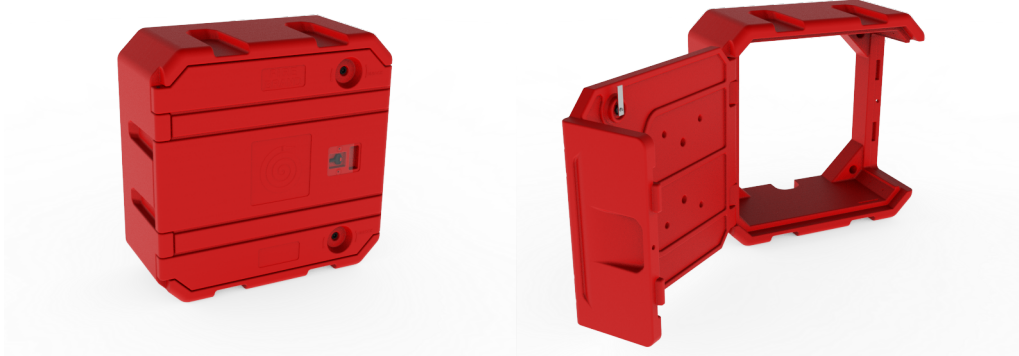


Hose Reel Cabinet



Features:

Made from high quality virgin LLDPE • Replaceable snap glass system for easy servicing and maintenance • Uses the same key and lock as the rest of the range • Double-wall lid and body for extreme strength • Mould-in rear craters for ease of mounting • Available in a wide range of stock colours • Custom colours available on request and subject to MoQ • Heavy and wind resistant • Highly UV and temperature resistant • Sandblasted surface allows for greater friction on all outer surfaces • Customisation and logos can be included via inserts • Can accommodate both fixed and swing reels

SKU	Description	mm (A)	mm (B)	mm (C)	KG
HRC-01-X	Hose Reel Cabinet	830	830	370	19

X = Colour options: Stock units carried in red. Other colours available on request.



BILL OF MATERIAL				
#	DESCRIPTION	DRAWING #	MASS (KG)	QUANTITY
1	BODY	COM-ROTO-HOS-107-Rev. 00	7	1
2	LID	COM-ROTO-HOS-106-Rev. 00	5.7	2
3	BREAK GLASS PIN	COM-INJ-BRE-45-Rev. 00	0.000478	2
4	BREAK GLASS	COM-INJ-BRE-44-Rev. 00	0.022	1
5	LOCK COMPONENT	COM-INJ-LOC-62-Rev. 00	0.006301	2
6	LOCK COMPONENT	COM-INJ-LOC-59-Rev. 00	0.002226	2
7	LOCK RING	COM-INJ-LOC-61-Rev. 00	0.001399	2
8	LOCK HINGE	COM-BO-LOC-69-Rev. 00	0.04	2
9	KEY	COM-INJ-KEY-58-Rev. 00	0.006437	2
10	WASHER	COM-BO-HOS-149-Rev. 00	0.000516	2
11	SELF TAPPING SKREW	CM-BO-HOS-148-Rev. 00	0.003594	2
TOTAL WEIGHT			18.54 KG	

	Dept. DRAWING	Technical reference	Created by	Document type	Document status
			Johnathan Roth 2021/12/09	DRAWING	APPROVED
		The		Drawing No.	
		HOSE REEL CABINET ASSEMBLY		AS-HOS-02-Rev. 00	
Rev.	Date of issue				
00	2021/12/09				
					Sheet
					1/1